

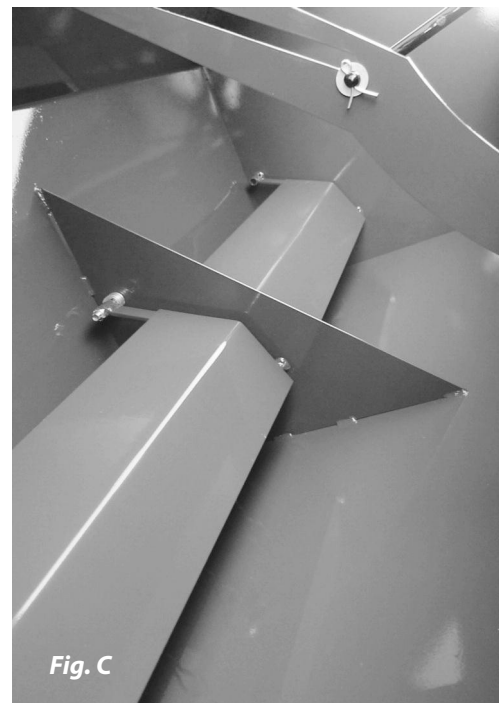
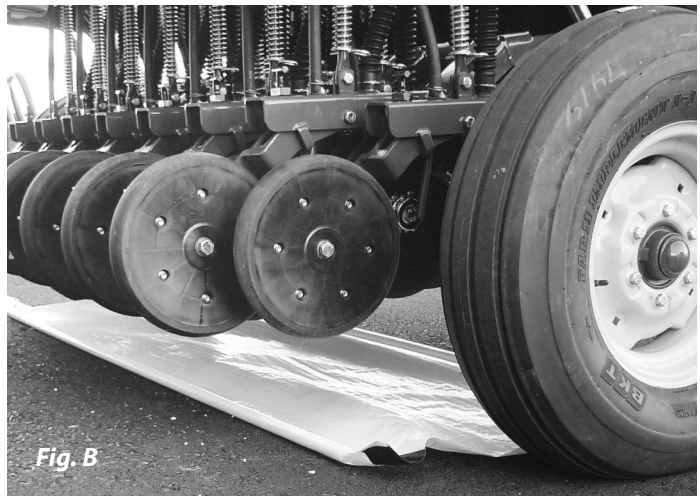
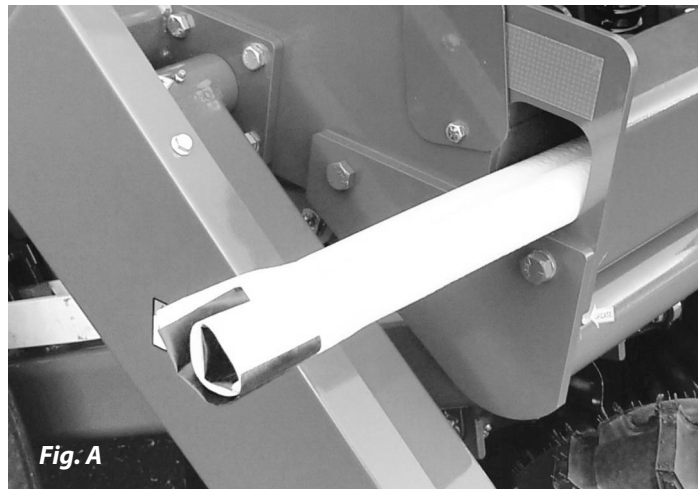
ESCH 5607 DRILL

Operator's Manual and Parts List



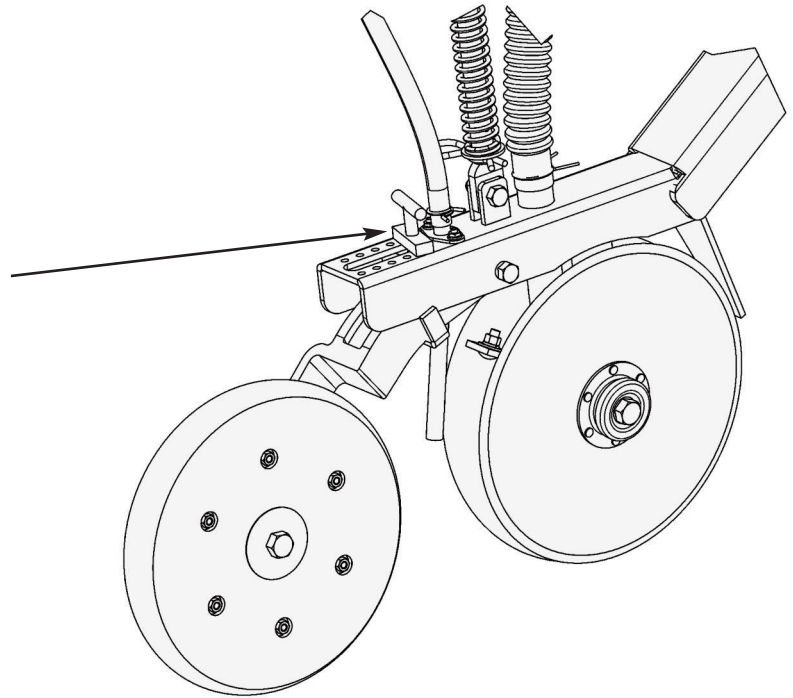
Seed Calibrations and Settings

- Remove plastic from frame (see Fig. A).
- Place plastic under drill to collect seeds for calibration (see Fig. B).
- See seed chart on lid for further instructions. Note: Be sure to turn drive wheel the correct direction. **WARNING: turning drive wheel too fast will result in wrong calibration. Turn wheel at ground speed.**
- When placing seed in hopper, keep seed baffles down (see Fig.C).
- Keep baffles in up position when seeding fluffy seed.



Setting Seeding Depth

- No-till coulters depth can only be set by lowering and raising drill.
- Set no-till coulters approximately 1/2" to 1" deeper than seeding depth.
- Seeding depth can be adjusted by sliding T-handle forward for shallow and backward for deeper.



Safety

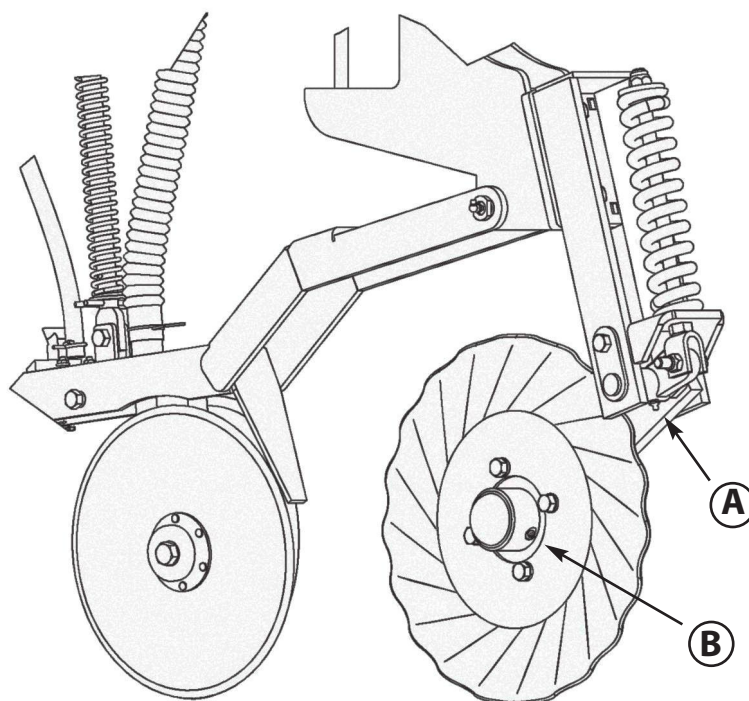
- Do not ride on drill while moving.
- Do not make sharp turns while drill is down.
- Raise drill when going over rocks that are above ground.

Storage

- Do not store in area where there are lots of mice. Mice like to chew the foams if they can get in the seed box.

Maintenance

- Grease coulters arms: every 10 hours. **(A)**
- Grease coulters hubs: every 50 hours. **(B)**
- Grease all other zerks: every 20 hours.



Replacing Foams

- Remove shield on back side of drill (wing nuts).
- Remove shield on left side of seed box.
- Loosen set screws where square shaft slides into round coupler.
- Now shaft is ready to pull out.
- Foam can be cut from plate with a sharp knife or razor.
- Set foams and plate on a piece of card board.
- Spray foams and plates with a spray adhesive.
- Leave set for approximately 1 minute before setting foam on plate.

Trouble Shooting

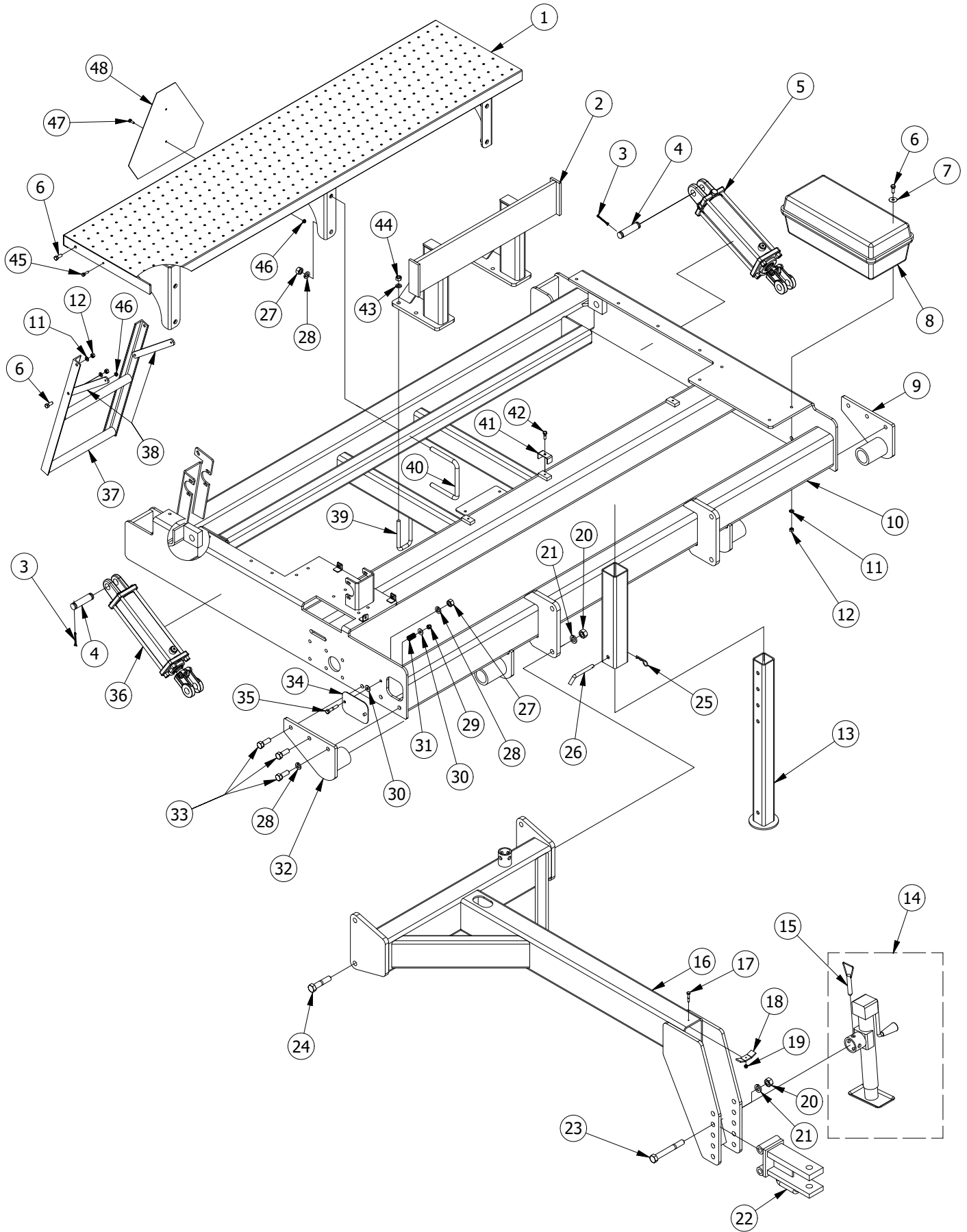
1 - Seed flows faster on one row:

Foam may be torn or mouse may have chewed a hole in the foam.

2 - One side of drill is lower than other side:

Raise drill the whole way up to reallign.

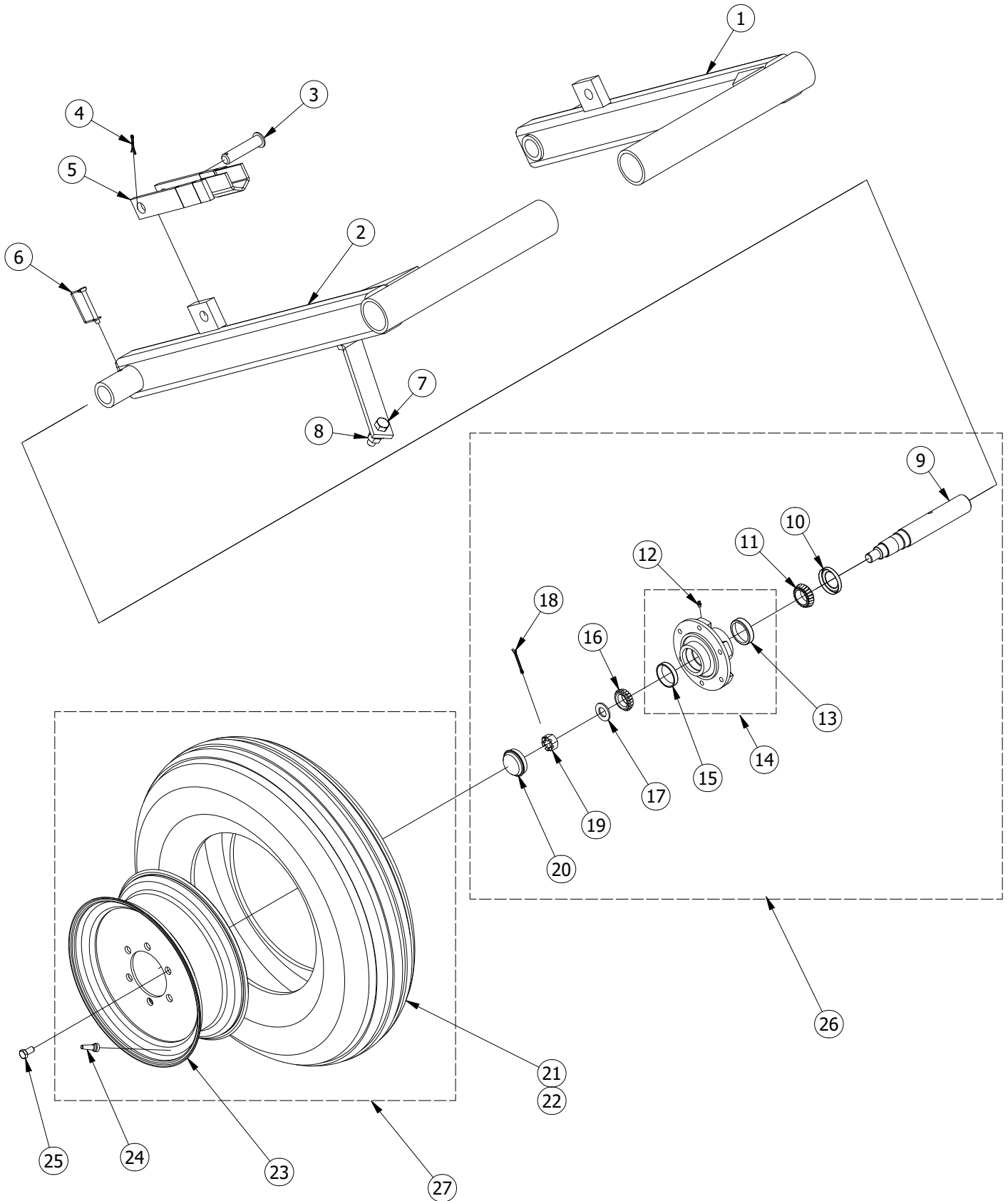
FRAME ASSEMBLY - 5607 DRILL



FRAME ASSEMBLY - 5607 DRILL

| PARTS LIST | | | | |
|------------|-----|-------------|----------------------------|------------------|
| ITEM | QTY | PART NUMBER | DESCRIPTION | COMMENTS |
| 1 | 1 | 111920 | PLATFORM | |
| 2 | 1 | 111620 | WEIGHT BRACKET | |
| 3 | 4 | 91100800 | 5/32 x 2 COTTER PIN | |
| 4 | 2 | 1124 | PIN | |
| 5 | 1 | 1106 | HYDRAULIC CYLINDER | SEAL KIT - 1106K |
| 6 | 8 | 12416045 | 3/8-16 UNC X 1 HEX BOLT | |
| 7 | 4 | 72405000 | FENDER WASHER | |
| 8 | 1 | 1115 | TOOL BOX | |
| 9 | 1 | 110820 | SUPPORT - LEFT | |
| 10 | 1 | 110520 | FRAME - 7 FT DRILL | |
| 11 | 8 | 62400000 | 3/8 LOCK WASHER | |
| 12 | 8 | 32416005 | 3/8 - 16 HEX NUT | |
| 13 | 1 | 111020 | TRANSPORT JACK | |
| 14 | 1 | 1101 | JACK | |
| 15 | 1 | 1102 | PIN | |
| 16 | 1 | 110420 | TONGUE | |
| 17 | 1 | 11620065 | HEX BOLT | |
| 18 | 1 | 111220 | HOSE CLAMP | |
| 19 | 1 | 51620002 | 1/4 - 20 HEX LOCK NUT | |
| 20 | 6 | 34810005 | 3/4 - 10 HEX NUT | |
| 21 | 6 | 64800000 | 3/4 LOCK WASHER | |
| 22 | 1 | 110320 | HITCH | |
| 23 | 2 | 14810245 | 3/4-10 UNC X 6 HEX BOLT | |
| 24 | 4 | 14810145 | 3/4-10 UNC X 3.5 HEX BOLT | |
| 25 | 1 | 1128 | 1/8 HAIRPIN | |
| 26 | 1 | 1111 | PIN | |
| 27 | 10 | 34011005 | 5/8 - 11 HEX NUT | |
| 28 | 12 | 64000000 | 5/8 LOCK WASHER | |
| 29 | 1 | 52416005 | 3/8 - 16 HEX LOCK NUT | |
| 30 | 2 | 72400000 | 3/8 WASHER | |
| 31 | 1 | 1613 | SPRING | |
| 32 | 1 | 110920 | SUPPORT RIGHT | |
| 33 | 6 | 14011075 | 5/8-11 UNC X 1.75 HEX BOLT | |
| 34 | 1 | 112320 | TARP COVER | |
| 35 | 1 | 12416085 | 3/8-16 UNC X 2 HEX BOLT | |
| 36 | 1 | 1107 | HYDRAULIC CYLINDER | SEAL KIT - 1107K |
| 37 | 1 | 112020 | LADDER | |
| 38 | 2 | 112120 | BRACE | |
| 39 | 4 | 1117 | U BOLT | |
| 40 | 3 | 1118 | U BOLT | |
| 41 | 4 | 1075 | HOSE CLIP | |
| 42 | 4 | 12018045 | 5/16-18 UNC X 1 HEX BOLT | |
| 43 | 8 | 63200000 | 1/2 LOCK WASHER | |
| 44 | 8 | 33213005 | 1/2 - 13 HEX NUT | |
| 45 | 2 | 11620045 | 1/4-20 UNC X 1 HEX BOLT | |
| 46 | 4 | 41620005 | 1/4 - 20 HEX FLANGE NUT | |
| 47 | 2 | 11620035 | 1/4-20 UNC X 0.75 HEX BOLT | |
| 48 | 1 | 1122 | SMV | |

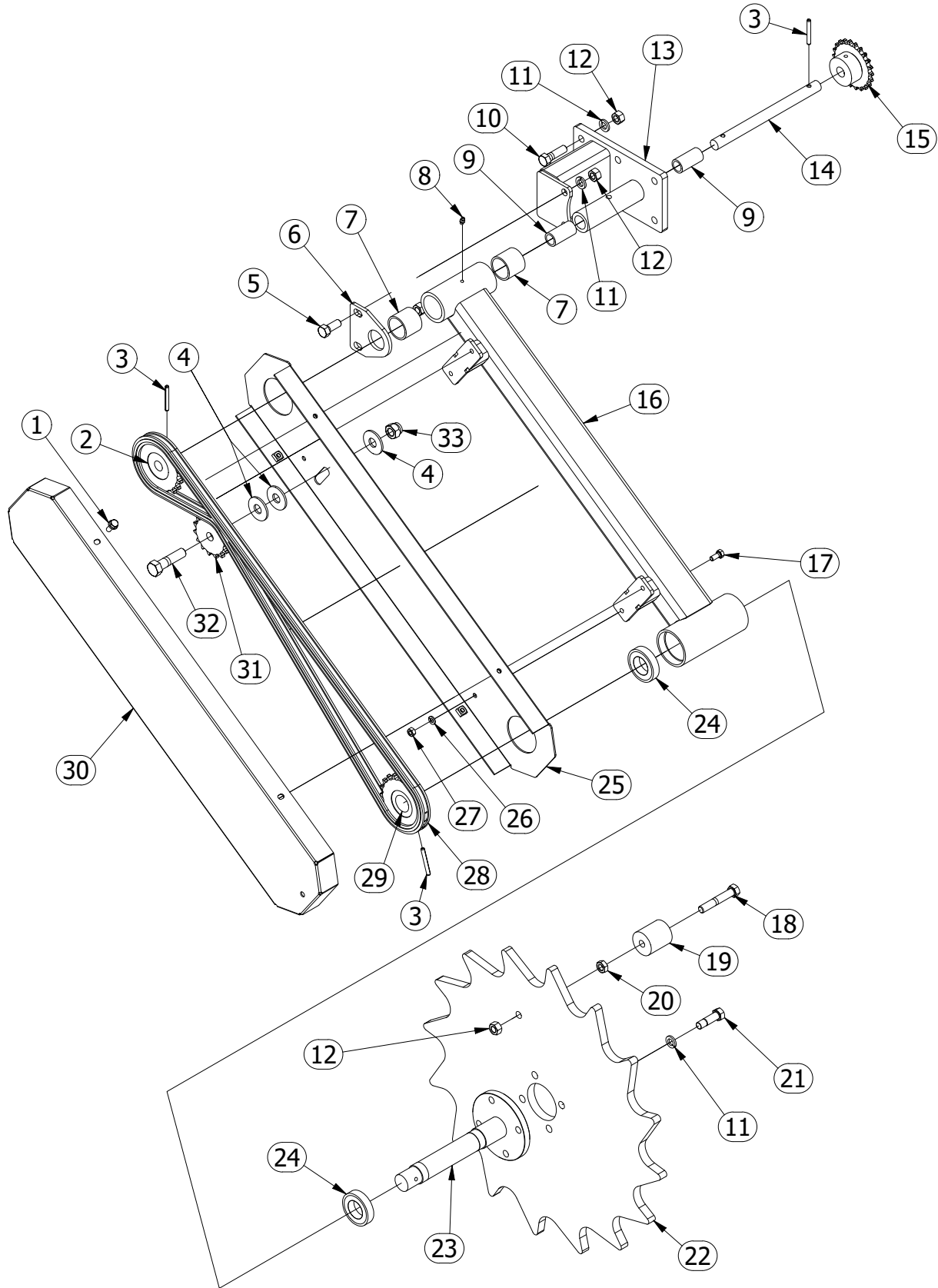
LIFT WHEEL - 5607 DRILL



LIFT WHEEL - 5607 DRILL

| PARTS LIST | | | | |
|------------|-----|----------|---------------------------|--------------------------------------|
| ITEM | QTY | PART # | DESCRIPTION | COMMENTS |
| 1 | 1 | 115220 | LEFT LIFT ARM | |
| 2 | 1 | 115120 | RIGHT LIFT ARM | |
| 3 | 2 | 1167 | PIN | |
| 4 | 2 | 91120600 | 3/16 x 1 1/2 COTTER PIN | |
| 5 | 2 | 1166 | CYLINDER PROP | |
| 6 | 2 | 1153 | LOCK PIN | |
| 7 | 1 | 14810105 | 3/4-10 UNC X 2.5 HEX BOLT | |
| 8 | 1 | 34810005 | 3/4 - 10 HEX NUT | |
| 9 | 2 | 115420 | SPINDLE | |
| 10 | 2 | 1156 | SEAL | |
| 11 | 2 | 1158 | BEARING | |
| 12 | 2 | Z1428 | ZERK | |
| 13 | 2 | 1157 | BEARING CUP | |
| 14 | 2 | 115520 | HUB | INCLUDES 1157, 1159, Z1428 |
| 15 | 2 | 1159 | BEARING CUP | |
| 16 | 2 | 1160 | BEARING | |
| 17 | 2 | 85600000 | 7/8 SAE WASHER | |
| 18 | 2 | 91100800 | 5/32 x 2 COTTER PIN | |
| 19 | 2 | 1663 | 7/8 - 14 SLOTTED HEX NUT | |
| 20 | 2 | 166420 | HUB CAP | |
| 21 | 2 | 1162 | TIRE | |
| 22 | 2 | 1161 | INNER TUBE | |
| 23 | 2 | 116320 | RIM | |
| 24 | 2 | 1190 | VALVE STEM | |
| 25 | 12 | 1512 | LUG BOLT | |
| 26 | 2 | 118220 | SPINDLE AND HUB ASSEMBLY | |
| 27 | 1 | 116520 | WHEEL ASSEMBLY | INCLUDES 116320, 1161, 1162, 1190 |

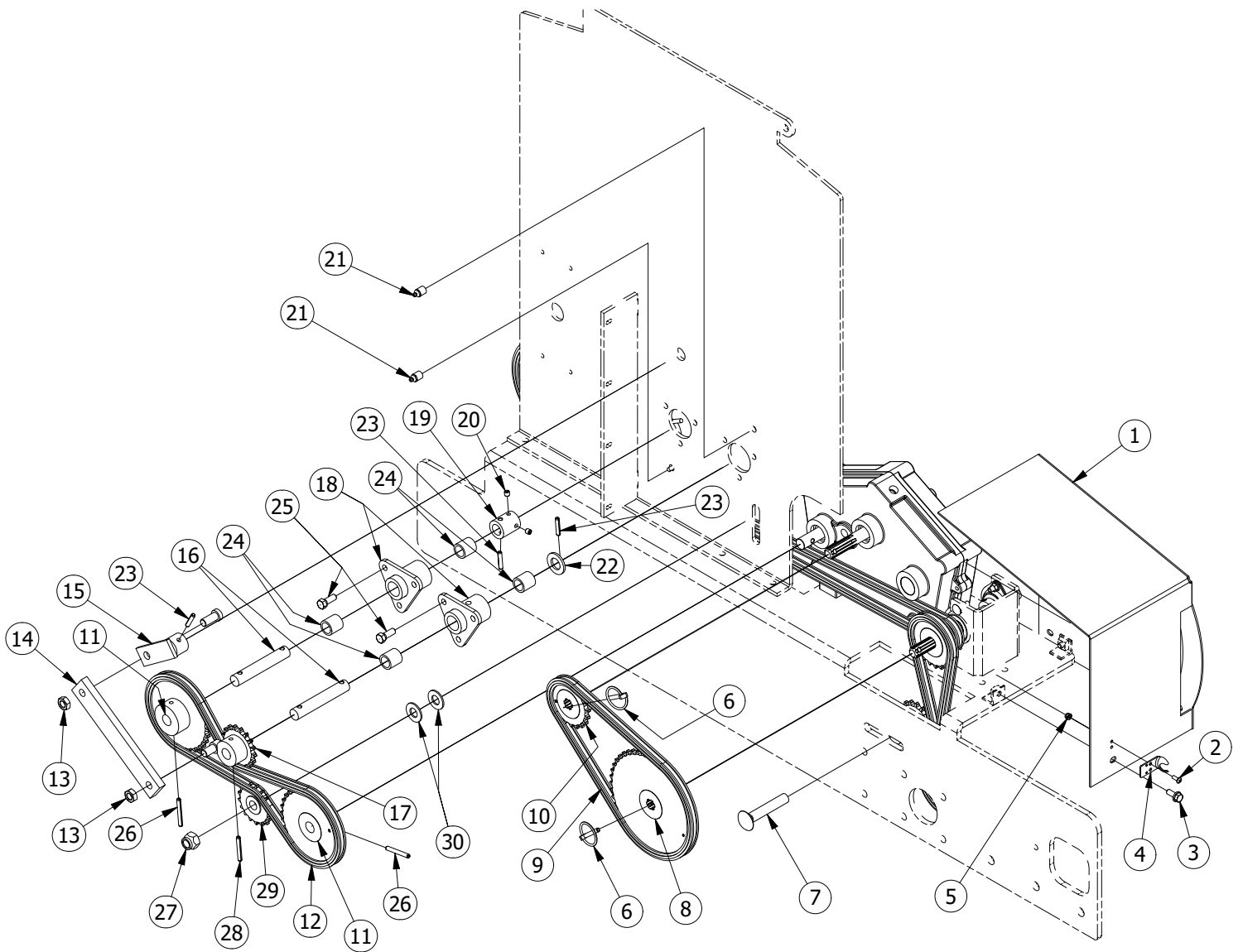
DRIVE ARM - 5607 DRILL



DRIVE ARM - 5607 DRILL

| PARTS LIST | | | | |
|------------|-----|----------|-----------------------------|----------|
| ITEM | QTY | PART # | DESCRIPTION | COMMENTS |
| 1 | 4 | 12018032 | 5/16-18 X 0.75 FLANGE BOLT | |
| 2 | 1 | 1517 | SPROCKET - 20T | |
| 3 | 3 | 93160800 | 1/4 x 2 ROLL PIN | |
| 4 | 3 | 74000000 | 5/8 WASHER | |
| 5 | 2 | 13213055 | 1/2-13 UNC X 1.25 HEX BOLT | |
| 6 | 1 | 150220 | SUPPORT | |
| 7 | 2 | 1518 | BUSHING | |
| 8 | 1 | Z1428 | ZERK | |
| 9 | 2 | 1519 | BUSHING | |
| 10 | 6 | 13213075 | 1/2-13 UNC X 1.75 HEX BOLT | |
| 11 | 12 | 63200000 | 1/2 LOCK WASHER | |
| 12 | 9 | 33213005 | 1/2 - 13 HEX NUT | |
| 13 | 1 | 150120 | SUPPORT | |
| 14 | 1 | 1520 | SHAFT | |
| 15 | 1 | 1527 | SPROCKET - 22T | |
| 16 | 1 | 153120 | DRIVE WHEEL ARM | |
| 17 | 4 | 12018035 | 5/16-18 UNC X 0.75 HEX BOLT | |
| 18 | 1 | 13213128 | 1/2-13 UNC X 3 HEX BOLT | |
| 19 | 1 | 1511 | SLEEVE | |
| 20 | 1 | 53213002 | 1/2 - 13 HEX JAM NUT | |
| 21 | 4 | 13220075 | 1/2-20 UNF X 1.75 HEX BOLT | |
| 22 | 1 | 1521 | STEEL DRIVE WHEEL | |
| 23 | 1 | 153220 | DRIVE WHEEL SPINDLE | |
| 24 | 2 | 153320 | BEARING | |
| 25 | 1 | 153520 | DRIVE ARM INNER SHIELD | |
| 26 | 4 | 62000000 | 5/16 LOCK WASHER | |
| 27 | 4 | 32018005 | 5/16 - 18 HEX NUT | |
| 28 | 1 | 1515 | #50 CHAIN - 112 LINKS | |
| 29 | 1 | 1514 | SPROCKET - 20T | |
| 30 | 1 | 153620 | DRIVE ARM OUTER SHEILD | |
| 31 | 1 | 1516 | IDLER SPROCKET | |
| 32 | 1 | 14011105 | 5/8-11 UNC X 2.5 HEX BOLT | |
| 33 | 1 | 54011005 | 5/8 - 11 HEX LOCK NUT | |

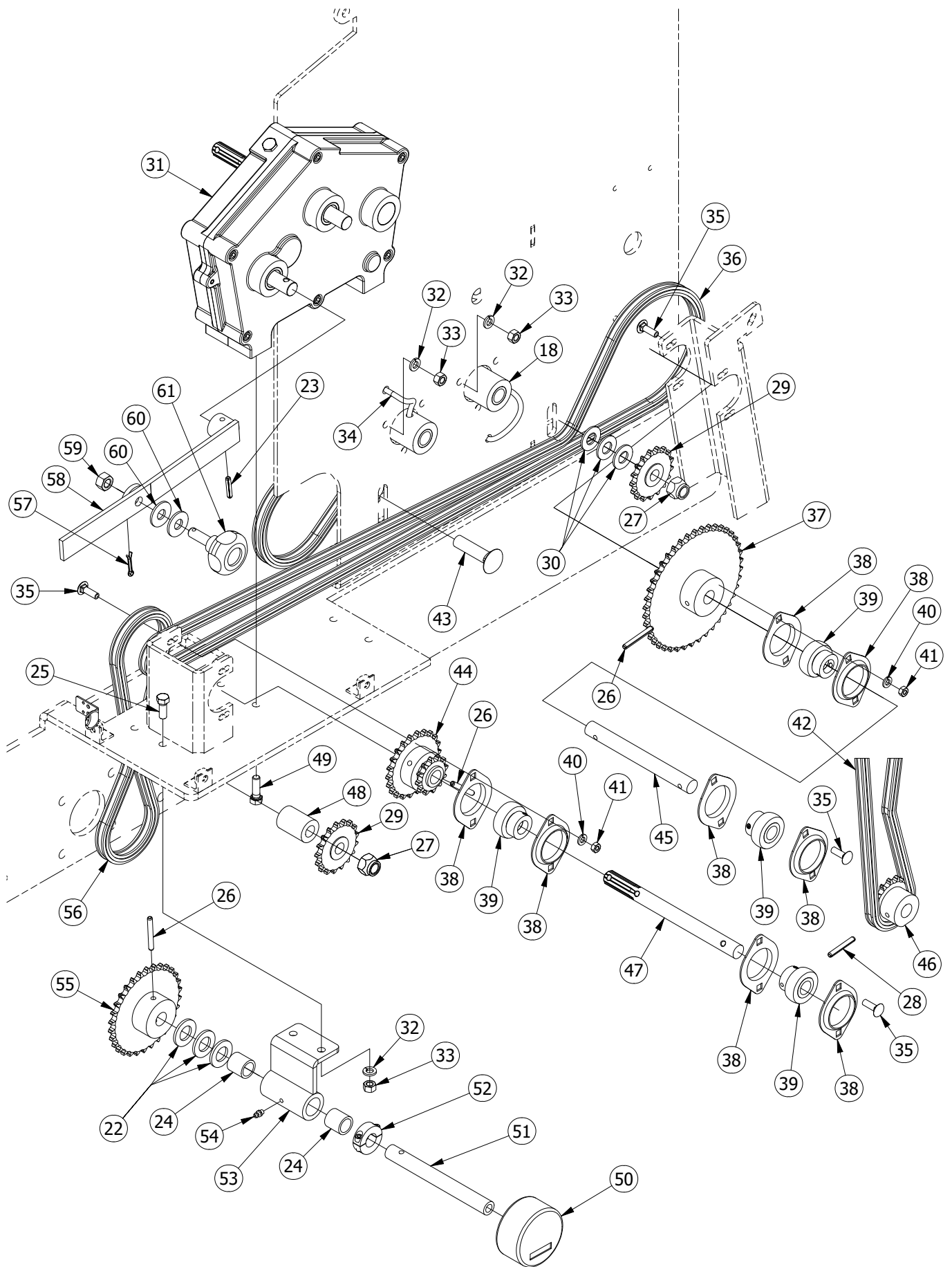
DRIVE ASSEMBLY - OUTSIDE - 5607 DRILL



DRIVE ASSEMBLY - OUTSIDE - 5607 DRILL

| PARTS LIST | | | | |
|------------|-----|-------------|------------------------------|----------|
| ITEM | QTY | PART NUMBER | DESCRIPTION | COMMENTS |
| 1 | 1 | 140320 | GEARBOX SHIELD | |
| 2 | 2 | 11024022 | 10 - 24 X 1/2 PAN HEAD SCREW | |
| 3 | 3 | 12018032 | 5/16-18 X 0.75 FLANGE BOLT | |
| 4 | 1 | 1404 | HOOD LATCH SUPPORT | |
| 5 | 2 | 51024002 | No. 10 - 24 HEX LOCK NUT | |
| 6 | 2 | 1421 | LINCH PIN | |
| 7 | 1 | 24011145 | 5/8-11 X 3.5 CARRIAGE BOLT | |
| 8 | 1 | 1419 | SPROCKET - 45T | |
| 9 | 1 | 1420 | #40 CHAIN 67 LINKS | |
| 10 | 1 | 1418 | SPROCKET - 20T | |
| 11 | 2 | 1410 | SPROCKET - 32T | |
| 12 | 1 | 1426 | #40 CHAIN 84 LINKS | |
| 13 | 2 | 53213002 | 1/2 - 13 HEX JAM NUT | |
| 14 | 1 | 1407 | AGITATOR LINK | |
| 15 | 1 | 1406 | AGITATOR ARM | |
| 16 | 2 | 1412 | SEED BOX JACK SHAFT | |
| 17 | 1 | 1408 | SPROCKET - 17T | |
| 18 | 2 | 141620 | TRIANGLE HUB | |
| 19 | 1 | 1411 | SQUARE COUPLER | |
| 20 | 2 | 1414 | 5/16-18 X 0.31 SET SCREW | |
| 21 | 2 | Z18FP | ZERK | |
| 22 | 1 | 84800000 | 3/4 SAE WASHER | |
| 23 | 3 | 93160500 | 1/4 x 1 1/4 ROLL PIN | |
| 24 | 4 | 1415 | BRONZE BUSHING | |
| 25 | 6 | 12416045 | 3/8-16 UNC X 1 HEX BOLT | |
| 26 | 2 | 93160800 | 1/4 x 2 ROLL PIN | |
| 27 | 1 | 54011005 | 5/8 - 11 HEX LOCK NUT | |
| 28 | 1 | 93160700 | 1/4 x 1 3/4 ROLL PIN | |
| 29 | 1 | 1409 | IDLER SPROCKET | |
| 30 | 2 | 84000000 | 5/8 SAE WASHER | |

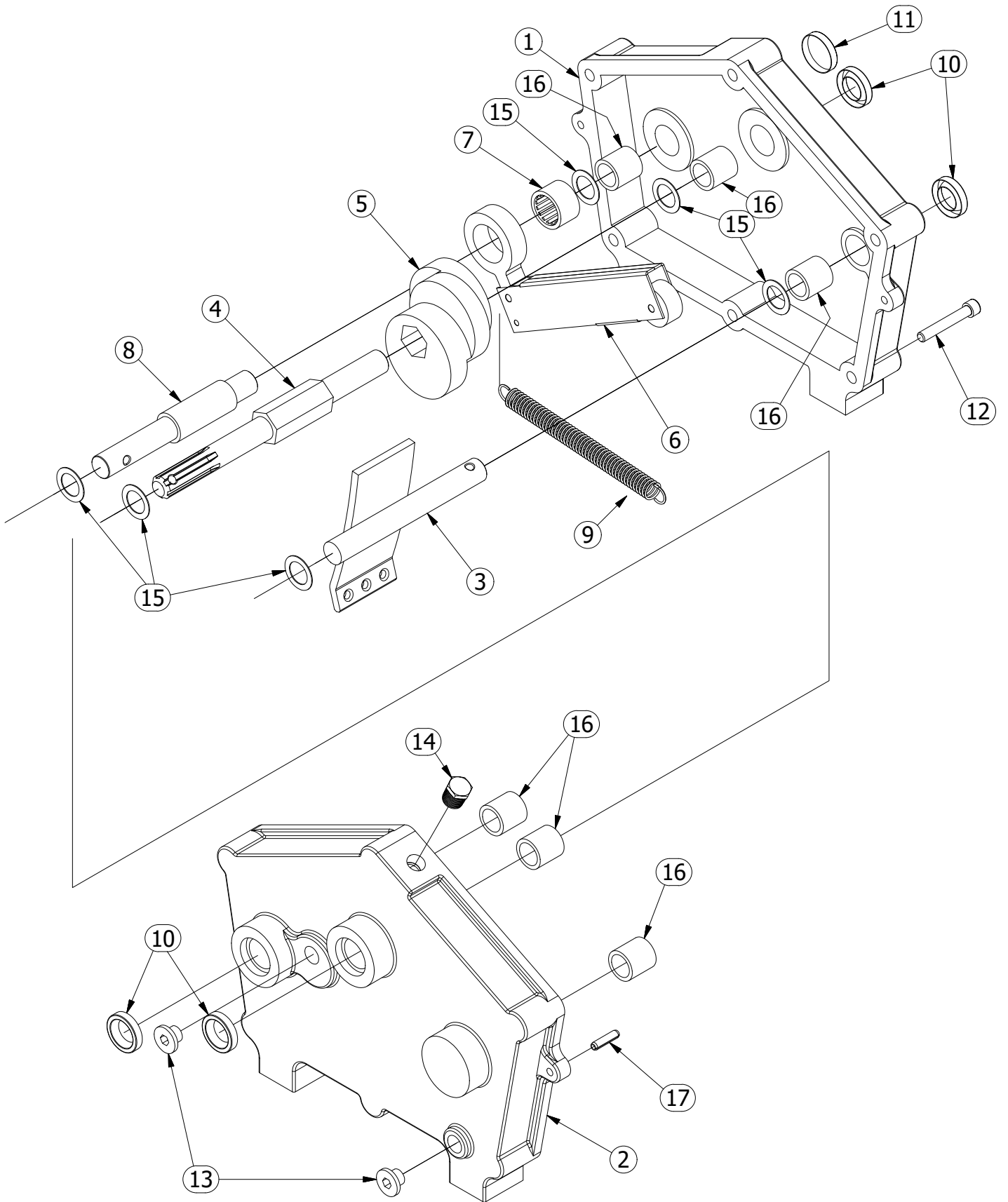
DRIVE ASSEMBLY - INSIDE - 5607 DRILL



DRIVE ASSEMBLY - INSIDE - 5607 DRILL

| PARTS LIST | | | | |
|------------|-----|-------------|----------------------------|----------|
| ITEM | QTY | PART NUMBER | DESCRIPTION | COMMENTS |
| 22 | 3 | 84800000 | 3/4 SAE WASHER | |
| 23 | 1 | 93160500 | 1/4 x 1 1/4 ROLL PIN | |
| 24 | 2 | 1415 | BRONZE BUSHING | |
| 25 | 2 | 12416045 | 3/8-16 UNC X 1 HEX BOLT | |
| 26 | 3 | 93160800 | 1/4 x 2 ROLL PIN | |
| 27 | 2 | 54011005 | 5/8 - 11 HEX LOCK NUT | |
| 28 | 1 | 93160700 | 1/4 x 1 3/4 ROLL PIN | |
| 29 | 2 | 1409 | IDLER SPROCKET | |
| 30 | 3 | 84000000 | 5/8 SAE WASHER | |
| 31 | 1 | 1401 | GEARBOX | |
| 32 | 12 | 62400000 | 3/8 LOCK WASHER | |
| 33 | 8 | 32416005 | 3/8 - 16 HEX NUT | |
| 34 | 2 | 1417 | GREASE HOSE | |
| 35 | 8 | 22018042 | 5/16-18 X 1 CARRIAGE BOLT | |
| 36 | 1 | 1439 | #40 CHAIN 172 LINKS | |
| 37 | 1 | 1435 | SPROCKET - 42T | |
| 38 | 8 | 1424 | BEARING FLANGE | |
| 39 | 4 | 1423 | BEARING | |
| 40 | 8 | 62000000 | 5/16 LOCK WASHER | |
| 41 | 8 | 32018005 | 5/16 - 18 HEX NUT | |
| 42 | 1 | 1438 | #40 CHAIN 93 LINKS | |
| 43 | 2 | 24011105 | 5/8-11 X 2.5 CARRIAGE BOLT | |
| 44 | 1 | 1425 | SPROCKET - 22T, 12T | |
| 45 | 1 | 1436 | SHAFT | |
| 46 | 1 | 1437 | SPROCKET - 16T | |
| 47 | 1 | 1422 | SPLINE SHAFT | |
| 48 | 1 | 1428 | SPACER | |
| 49 | 4 | 12416055 | 3/8-16 UNC X 1.25 HEX BOLT | |
| 50 | 1 | 1431 | ACRE METER | |
| 51 | 1 | 1430 | ACRE METER SHAFT | |
| 52 | 1 | 1433 | SHAFT COLLAR | |
| 53 | 1 | 143220 | SUPPORT | |
| 54 | 1 | Z1428 | ZERK | |
| 55 | 1 | 1444 | SPROCKET - 30T | |
| 56 | 1 | 1434 | #40 CHAIN 67 LINKS | |
| 57 | 1 | 91100400 | 5/32 x 1 COTTER PIN | |
| 58 | 1 | 1402 | GEARBOX LEVER | |
| 59 | 1 | 33213005 | 1/2 - 13 HEX NUT | |
| 60 | 2 | 73200000 | 1/2 WASHER | |
| 61 | 1 | 1405 | KNOB | |

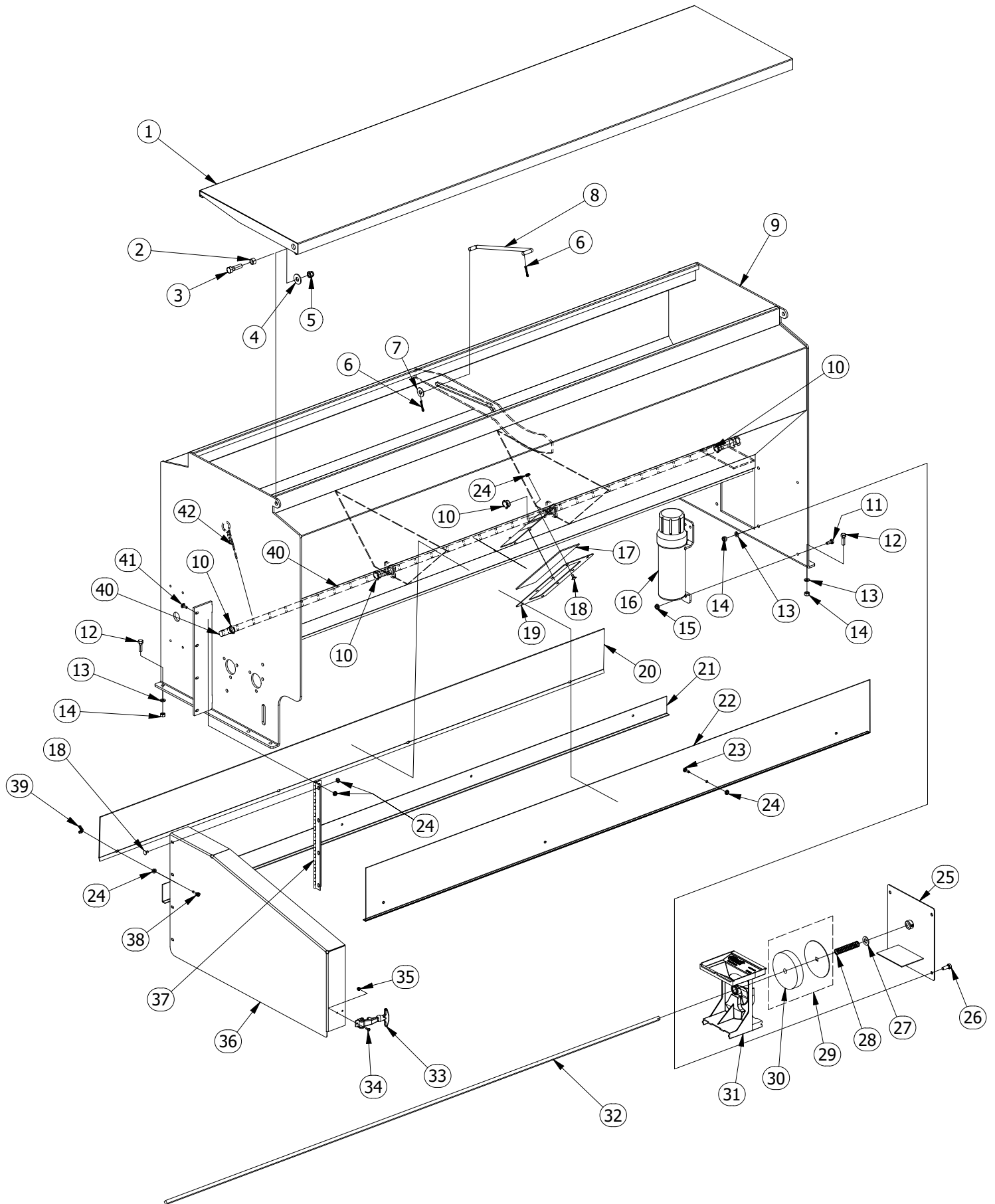
GEARBOX - 5607 DRILL



GEARBOX - 5607 DRILL

| PARTS LIST | | | | |
|------------|-----|----------|-----------------------|-------------------------------|
| ITEM | QTY | PART # | DESCRIPTION | COMMENTS |
| 1 | 1 | 1301 | GEARBOX LEFT CASTING | INCLUDES #1310, 1311, 1415 |
| 2 | 1 | 1302 | GEARBOX RIGHT CASTING | INCLUDES #1310, 1415 |
| 3 | 1 | 1303 | CAM GUIDE | |
| 4 | 1 | 1304 | SHAFT | |
| 5 | 1 | 1305 | GEARBOX CAM | |
| 6 | 3 | 1306 | GEARBOX ARM | |
| 7 | 3 | 1307 | CLUTCH BEARING | |
| 8 | 1 | 1308 | CAM ARM SHAFT | |
| 9 | 3 | 1309 | GEARBOX SPRING | |
| 10 | 4 | 1310 | SEAL | |
| 11 | 1 | 1311 | CAP | |
| 12 | 6 | 1312 | SOCKET HEAD BOLT | |
| 13 | 2 | 1314 | PLUG | |
| 14 | 1 | 1315 | BREATHER PLUG | |
| 15 | 6 | 1316 | SHIM WASHER | |
| 16 | 6 | 1415 | BRONZE BUSHING | |
| 17 | 2 | 93160400 | ROLL PIN | |

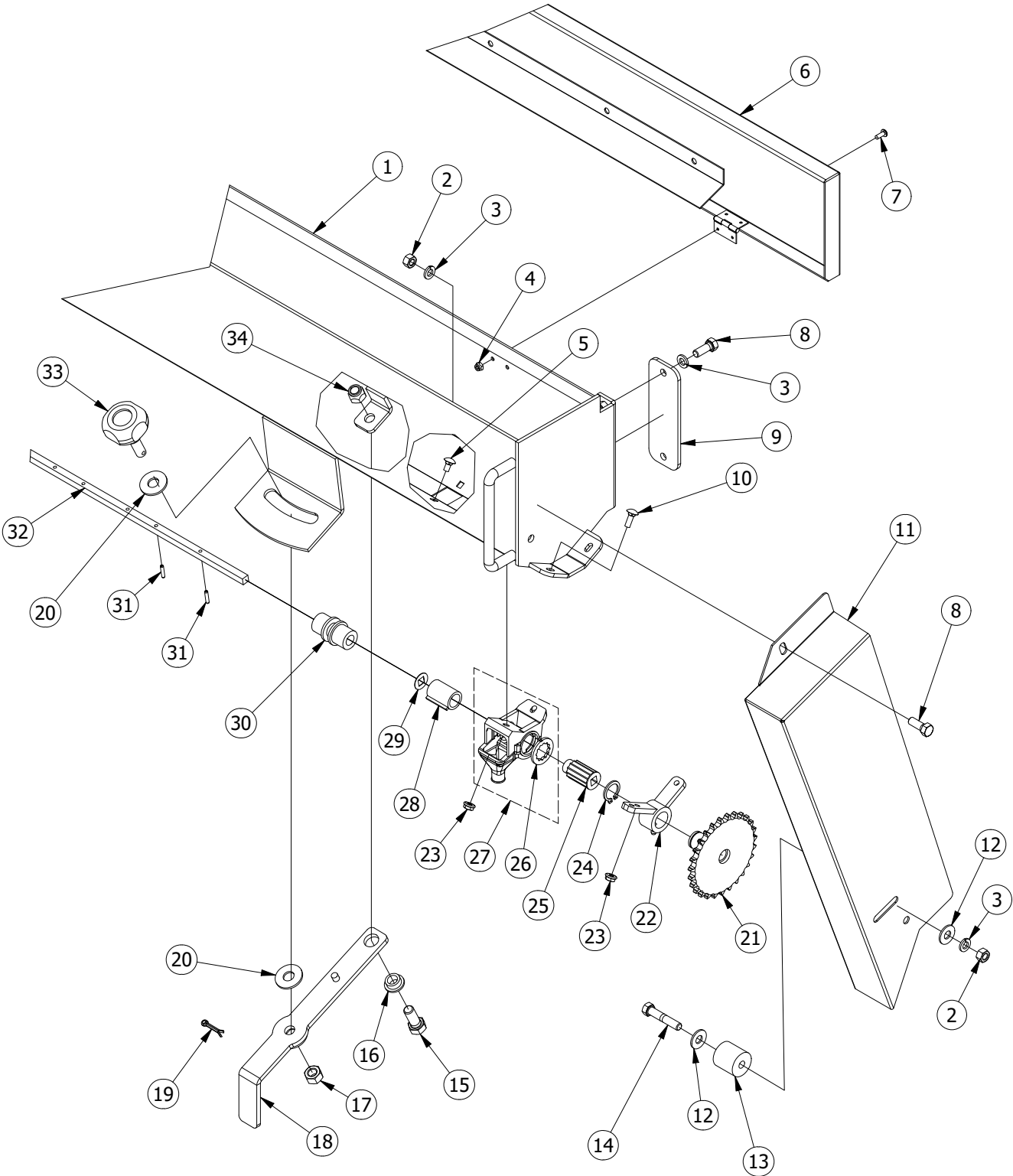
SEED BOX ASSEMBLY - 5607 DRILL



SEED BOX ASSEMBLY - 5607 DRILL

| PARTS LIST | | | | |
|------------|-----|-------------|------------------------------|----------|
| ITEM | QTY | PART NUMBER | DESCRIPTION | COMMENTS |
| 1 | 1 | 120220 | SEED BOX LID | |
| 2 | 2 | 1658 | BUSHING | |
| 3 | 2 | 13213075 | 1/2-13 UNC X 1.75 HEX BOLT | |
| 4 | 2 | 73200000 | 1/2 WASHER | |
| 5 | 2 | 53213005 | 1/2 - 13 HEX LOCK NUT | |
| 6 | 2 | 91100400 | 5/32 x 1 COTTER PIN | |
| 7 | 1 | 72800000 | 7/16 WASHER | |
| 8 | 1 | 1203 | LID GUIDE | |
| 9 | 1 | 120120 | SEED BOX | |
| 10 | 4 | 1214 | BUSHING | |
| 11 | 2 | 12018035 | 5/16-18 UNC X 0.75 HEX BOLT | |
| 12 | 8 | 12416055 | 3/8-16 UNC X 1.25 HEX BOLT | |
| 13 | 12 | 62400000 | 3/8 LOCK WASHER | |
| 14 | 12 | 32416005 | 3/8 - 16 HEX NUT | |
| 15 | 2 | 41818005 | 5/16 - 18 HEX FLANGE NUT | |
| 16 | 1 | 1220 | MANUAL HOLDER | |
| 17 | 1 | 1254 | SEED BOX WINDOW | |
| 18 | 12 | 21620022 | 1/4-20 X 0.5 CARRIAGE BOLT | |
| 19 | 1 | 125520 | SEED BOX WINDOW FRAME | |
| 20 | 1 | 120620 | REAR SHEILD REMOVABLE | |
| 21 | 1 | 120520 | REAR SHIELD | |
| 22 | 1 | 1204 | FRONT SHIELD | |
| 23 | 4 | 11620035 | 1/4-20 UNC X 0.75 HEX BOLT | |
| 24 | 24 | 41620005 | 1/4 - 20 HEX FLANGE NUT | |
| 25 | 1 | 120820 | COVER | |
| 26 | 4 | 12416045 | 3/8-16 UNC X 1 HEX BOLT | |
| 27 | 15 | 83600000 | 9/16 SAE WASHER | |
| 28 | 15 | 1212 | SPRING | |
| 29 | 15 | 1210 | FOAM PLATE | |
| 30 | 15 | 1211 | FOAM | |
| 31 | 15 | 1209 | SEED CHUTE | |
| 32 | 1 | 1213 | SEED BOX DRIVE SHAFT | |
| 33 | 1 | 1219 | HOOD LATCH | |
| 34 | 2 | 11024022 | 10 - 24 X 1/2 PAN HEAD SCREW | |
| 35 | 2 | 51024002 | No. 10 - 24 HEX LOCK NUT | |
| 36 | 1 | 121820 | GEARBOX SHIELD | |
| 37 | 1 | 121720 | HINGE | |
| 38 | 4 | 11620045 | 1/4-20 UNC X 1 HEX BOLT | |
| 39 | 4 | 1207 | WING NUT | |
| 40 | 1 | 1215 | AGITATOR SHAFT | |
| 41 | 4 | 21620032 | 1/4-20 X 0.75 CARRIAGE BOLT | |
| 42 | 15 | 1216 | AGITATOR CLIP | |

SMALL SEED BOX - 5607 DRILL



SMALL SEED BOX - 5607 DRILL

| PARTS LIST | | | | |
|------------|-----|-------------|------------------------------|----------|
| ITEM | QTY | PART NUMBER | DESCRIPTION | COMMENTS |
| 1 | 1 | 190120 | SEED BOX | |
| 2 | 2 | 32416005 | 3/8 - 16 HEX NUT | |
| 3 | 6 | 62400000 | 3/8 LOCK WASHER | |
| 4 | 4 | 51024002 | No. 10 - 24 HEX LOCK NUT | |
| 5 | 30 | 21620022 | 1/4-20 X 0.5 CARRIAGE BOLT | |
| 6 | 1 | 190220 | SMALL SEED BOX LID | |
| 7 | 4 | 11024022 | 10 - 24 X 1/2 PAN HEAD SCREW | |
| 8 | 5 | 12416045 | 3/8-16 UNC X 1 HEX BOLT | |
| 9 | 2 | 190020 | SMALL SEED BOX SUPPORT | |
| 10 | 2 | 21620032 | 1/4-20 X 0.75 CARRIAGE BOLT | |
| 11 | 1 | 191420 | SHIELD | |
| 12 | 2 | 72400000 | 3/8 WASHER | |
| 13 | 1 | 1915 | CHAIN TIGHTNER | |
| 14 | 1 | 12416085 | 3/8-16 UNC X 2 HEX BOLT | |
| 15 | 1 | 13213055 | 1/2-13 UNC X 1.25 HEX BOLT | |
| 16 | 1 | 1916 | SMALL SEED BOX LEVER BUSHING | |
| 17 | 1 | 33213005 | 1/2 - 13 HEX NUT | |
| 18 | 1 | 1910 | SMALL BOX LEVER | |
| 19 | 1 | 91100400 | 5/32 x 1 COTTER PIN | |
| 20 | 2 | 73200000 | 1/2 WASHER | |
| 21 | 1 | 1912 | SPROCKET 27T | |
| 22 | 1 | 1911 | BEARING | |
| 23 | 32 | 41620005 | 1/4 - 20 HEX FLANGE NUT | |
| 24 | 1 | 1913 | EXTERNAL RETAINING RINGS | |
| 25 | 15 | 1906 | SEED SPROCKET | |
| 26 | 15 | 1905 | SEED WASHER | |
| 27 | 15 | 1904 | SEED CUP | |
| 28 | 15 | 1907 | SLEEVE | |
| 29 | 15 | 1908 | WASHER | |
| 30 | 1 | 1909 | ADJUSTMENT COLLAR | |
| 31 | 30 | 93100300 | ROLL PIN | |
| 32 | 1 | 1903 | SMALL SEED BOX SHAFT | |
| 33 | 1 | 1405 | KNOB | |
| 34 | 1 | 53213005 | 1/2 - 13 HEX LOCK NUT | |

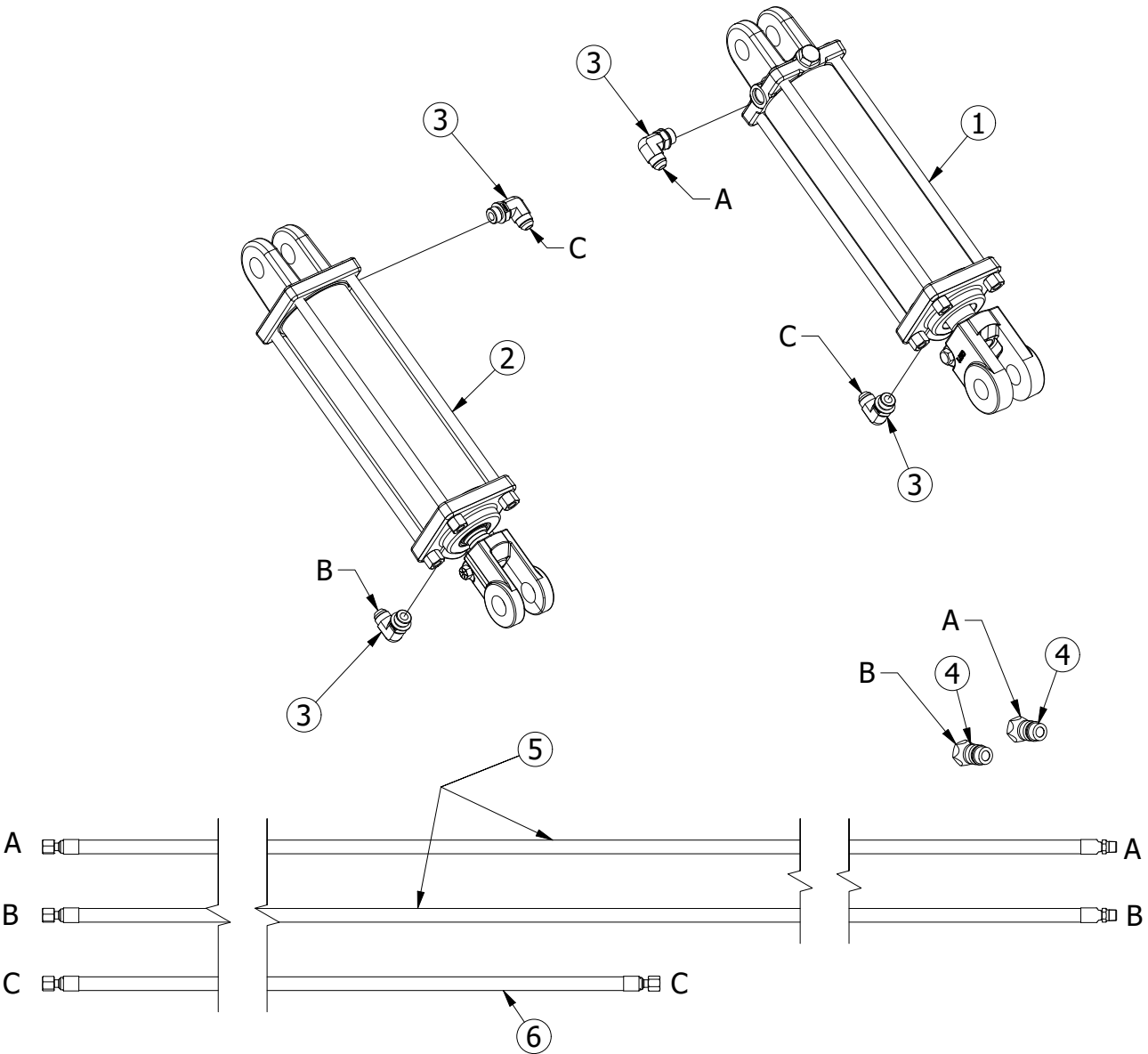
COULTER UNIT - 5607 DRILL

| PARTS LIST | | | | |
|------------|-----|-------------|----------------------------|----------------------|
| ITEM | QTY | PART NUMBER | DESCRIPTION | COMMENTS |
| 1 | 15 | 165320 | COULTER ARM MOUNT | |
| 2 | 60 | 64000000 | 5/8 LOCK WASHER | |
| 3 | 30 | 14011075 | 5/8-11 UNC X 1.75 HEX BOLT | |
| 4 | 15 | 54011005 | 5/8 - 11 HEX LOCK NUT | |
| 5 | 15 | 1655 | COULTER SPRING CAP | |
| 6 | 15 | 1656 | COULTER SPRING | |
| 7 | 15 | Z1490 | ZERK , 90 deg | |
| 8 | 15 | 33213005 | 1/2 - 13 HEX NUT | |
| 9 | 75 | 63200000 | 1/2 LOCK WASHER | |
| 10 | 15 | 1657 | COULTER SPRING BOLT | |
| 11 | 15 | 13213108 | 1/2-13 UNC X 2.5 HEX BOLT | |
| 12 | 15 | 1658 | WEAR BUSHING | |
| 13 | 15 | 165920 | COULTER ARM | |
| 14 | 15 | 1660 | BEARING WITH SEAL | |
| 15 | 15 | 1661 | BEARING | |
| 16 | 15 | 166520 | COULTER HUB | INCLUDES 1662, Z1428 |
| 17 | 8 | Z1428 | ZERK | |
| 18 | 15 | 1667 | COULTER SPINDLE WASHER | |
| 19 | 15 | 1663 | 7/8 - 14 SLOTTED HEX NUT | |
| 20 | 15 | 166420 | HUB CAP | |
| 21 | 60 | 13220035 | 1/2-20 UNF X 0.75 HEX BOLT | |
| 22 | 15 | 1666 | COULTER BLADE | |
| 23 | 15 | 91100800 | 5/32 x 2 COTTER PIN | |
| 24 | 30 | 1662 | BEARING CUP | |
| 25 | 15 | 53213005 | 1/2 - 13 HEX LOCK NUT | |
| 26 | 15 | 165420 | COULTER ARM PIN | |
| 27 | 15 | 13213055 | 1/2-13 UNC X 1.25 HEX BOLT | |
| 28 | 30 | 34011005 | 5/8 - 11 HEX NUT | |
| 29 | 15 | 84000000 | 5/8 SAE WASHER | |
| 30 | 15 | 1652 | L BOLT | |
| 31 | 8 | 165020 | LONG MOUNTING BRACKET | |
| 32 | 7 | 165120 | SHORT MOUNTING BRACKET | |
| 33 | 15 | 166920 | COULTER ARM ASSEMBLY | |

DISC UNIT - 5607 DRILL

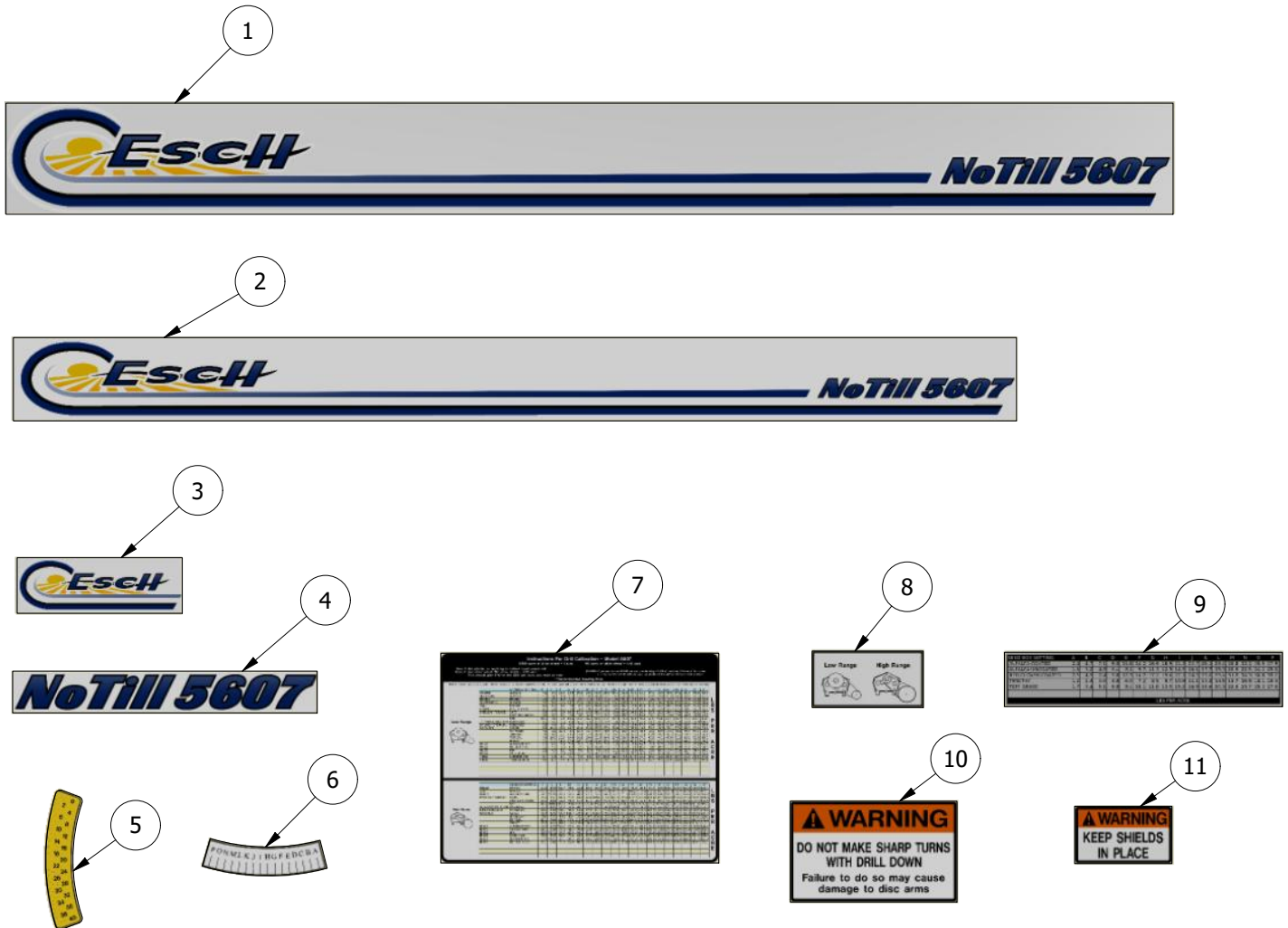
| PARTS LIST | | | | |
|------------|-----|----------|-----------------------------|----------|
| ITEM | QTY | PART # | DESCRIPTION | COMMENTS |
| 1 | 15 | 1623 | U BOLT | |
| 2 | 15 | 162220 | ROD PLATE | |
| 3 | 45 | 62400000 | 3/8 LOCK WASHER | |
| 4 | 45 | 32416005 | 3/8 - 16 HEX NUT | |
| 5 | 15 | 1620 | LINCH PIN | |
| 6 | 15 | 1621 | BUSHING | |
| 7 | 30 | 85600000 | 7/8 SAE WASHER | |
| 8 | 15 | 1619 | SPRING | |
| 9 | 15 | 161720 | SPRING ROD | |
| 10 | 15 | 1618 | HAIRPIN | |
| 11 | 15 | 1626 | TOP HOSE CLAMP | |
| 12 | 15 | 1625 | HOSE | |
| 13 | 15 | 1624 | BOTTOM HOSE CLAMP | |
| 14 | 30 | 53213006 | 1/2 - 13 REV LOCK NUT | |
| 15 | 30 | 1608 | BUSHING | |
| 16 | 15 | 160320 | DOUBLE DISC ARM | |
| 17 | 30 | 53220008 | STOVER LOCK NUT | |
| 18 | 30 | 1600 | SPRING WASHER | |
| 19 | 15 | 1645 | WEAR BOLT KIT | |
| 20 | 30 | 1642 | DISC ARM BUSHING | |
| 21 | 30 | 1641 | SHOULDER BOLT | |
| 22 | 30 | 1605 | DISC BLADE | |
| 23 | 60 | 84000000 | 5/8 SAE WASHER | |
| 24 | 30 | 14011065 | 5/8-11 UNC X 1.5 HEX BOLT | |
| 25 | 30 | 1604 | DUST CAP | |
| 26 | 30 | 1627 | BOLT KIT | |
| 27 | 30 | 1606 | BEARING | |
| 28 | 15 | 1607 | SCRAPER | |
| 29 | 15 | 22416042 | 3/8-16 X 1 CARRIAGE BOLT | |
| 30 | 15 | 72400000 | 3/8 WASHER | |
| 31 | 30 | 21620032 | 1/4-20 X 0.75 CARRIAGE BOLT | |
| 32 | 15 | 13213168 | 1/2-13 UNC X 4 HEX BOLT | |
| 33 | 15 | 13213075 | 1/2-13 UNC X 1.75 HEX BOLT | |
| 34 | 15 | 83200000 | 1/2 SAE WASHER | |
| 35 | 15 | 1613 | SPRING | |
| 36 | 15 | 91100400 | 5/32 x 1 COTTER PIN | |
| 37 | 15 | 1612 | DEPTH BLOCK | |
| 38 | 15 | 1611 | T HANDLE | |
| 39 | 15 | 1628 | T HANDLE ASSEMBLY | |
| 40 | 15 | 14011105 | 5/8-11 UNC X 2.5 HEX BOLT | |
| 41 | 15 | 1630 | PRESS WHEEL BEARING | |
| 42 | 15 | 1610 | PRESS WHEEL | |
| 43 | 15 | 1631 | PRESS WHEEL TIRE | |
| 44 | 15 | 160920 | PACKER WHEEL ARM | |
| 45 | 30 | 1640 | PACKER ARM BUSHING | |
| 46 | 15 | 161420 | SEED TUBE | |
| 47 | 30 | 41620005 | 1/4 - 20 HEX FLANGE NUT | |
| 48 | 30 | 1616 | SMALL HOSE CLAMP | |
| 49 | 15 | 1615 | SEED HOSE | |

HYDRAULICS - 5607 DRILL



| PARTS LIST | | | |
|------------|-----|-------------|--------------------|
| ITEM | QTY | PART NUMBER | DESCRIPTION |
| 1 | 1 | 1106 | HYDRAULIC CYLINDER |
| 2 | 1 | 1107 | HYDRAULIC CYLINDER |
| 3 | 4 | 680188 | ADAPTER |
| 4 | 2 | 1012 | MALE QUICK COUPLER |
| 5 | 2 | 1004 | HYDRAULIC HOSE |
| 6 | 1 | 1003 | HYDRAULIC HOSE |

DECALS - 5607 DRILL



| PARTS LIST | | | | |
|------------|-----|--------|--------------------------|----------|
| ITEM | QTY | PART # | DESCRIPTION | COMMENTS |
| 1 | 1 | 182520 | FRONT LOGO DECAL | |
| 2 | 1 | 182620 | REAR LOGO DECAL | |
| 3 | 2 | 1818 | SIDE DECAL | |
| 4 | 2 | 182720 | SIDE DECAL - NO TILL | |
| 5 | 1 | 1801 | NUMBER GAUGE DECAL | |
| 6 | 1 | 1802 | LETTER GAUGE DECAL | |
| 7 | 1 | 182820 | SEED CHART DECAL | |
| 8 | 1 | 1803 | GEARBOX RANGE DECAL | |
| 9 | 1 | 1809 | SMALL SEED BOX CHART | |
| 10 | 1 | 1804 | WARNING SHARP TURN DECAL | |
| 11 | 2 | 1805 | WARNING SHIELDS DECAL | |